

Thermoflow®

Low-Profile Modular Natural Ventilator



MoffittCorp.com | (800) 474-3267
1351 13th Ave S. Suite 130
Jacksonville Beach, FL 32250

 **MOFFITT CORPORATION**
NATURAL VENTILATION SOLUTIONS

Thermoflow Table of Contents

Thermoflow Table of Contents 2

Thermoflow Product Details 3

Thermoflow Submittal Data..... 4

Thermoflow Pictures..... 5

Thermoflow Guide Specification..... 6

Thermoflow Product Details

STANDARD FEATURES

- Length: 4'11" – 11'11"
- Width: 5' – 10'

OPTIONAL FEATURES

- Dampers

BENEFITS

- Zero Maintenance Cost

APPLICATION

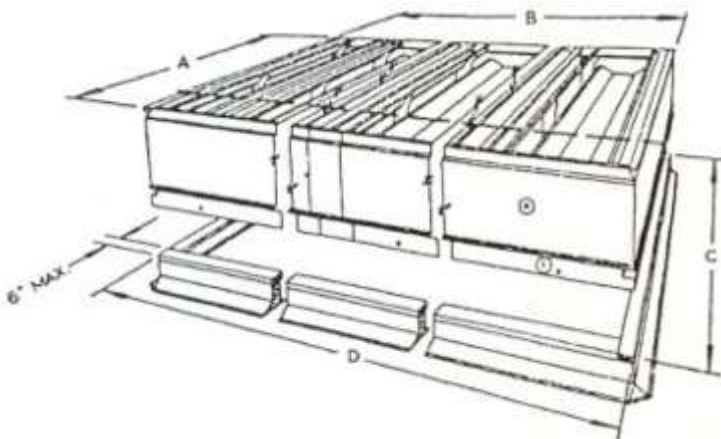
- | | | |
|-------------------------|-------------------|--------------------------|
| • Warehouses | • Aluminum Plants | • Mine Processing Plants |
| • General Manufacturing | • Glass Plants | • Pulp & Paper Plants |
| • Storage Facilities | • Power Plants | |
| • Steel Plants | • Chemical Plants | |

DESCRIPTION

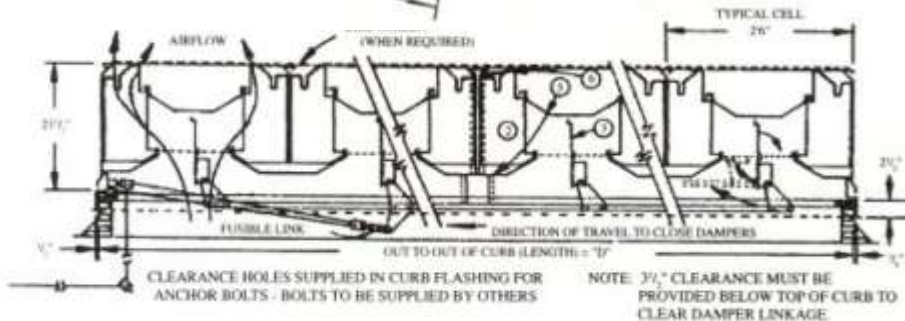
The Thermoflow[®] low-profile ventilator is very effective at evacuating large amounts of warm air and smoke. It has been designed to provide superior air-flow capacity levels and simplified installation, while still providing minimal roof load and wind load. The Thermoflow[®] is particularly useful in low-temperature climates that need a lightweight ventilation, because it has a built in damper that can be cut-off during cold weather.

Thermoflow Submittal Data

| MODULE NUMBER | NUMBER OF MODULES | OVERALL WIDTH A" | UNIT LENGTH B" | ACTUAL CURB C" | BUILDING | | WEIGHT POUNDS |
|---------------|-------------------|---------------------|-------------------|-------------------|------------|---------------------------|---------------|
| | | | | | O.D. D" | NET IN. GALV. ALUM. | |
| 52 | 2 | | 5'0" | | 5'0" | 210 | 130 |
| 53 | 3 | 4' 11" | 7'6" | 4'6" | 7'6" | 315 | 195 |
| 54 | 4 | | 10'0" | | 10'0" | 420 | 280 |
| 5(N) | N | | N x 2'6" | | N x 2'6" | N x 105 | N x 65 |
| 62 | 2 | | 5'0" | | 5'0" | 260 | 135 |
| 63 | 3 | 5' 11" | 7'6" | 5'6" | 7'6" | 390 | 200 |
| 64 | 4 | | 10'0" | | 10'0" | 520 | 270 |
| 6(N) | N | | N x 2'6" | | N x 2'6" | N x 130 | N x 68 |
| 72 | 2 | | 5'0" | | 5'0" | 280 | 140 |
| 73 | 3 | 7'5" | 7'6" | 7'0" | 7'6" | 420 | 210 |
| 74 | 4 | | 10'0" | | 10'0" | 560 | 280 |
| 7(N) | N | | N x 2'6" | | N x 2'6" | N x 140 | N x 70 |
| 82 | 2 | | 5'0" | | 5'0" | 330 | 170 |
| 83 | 3 | 8'8" | 7'6" | 8'3" | 7'6" | 495 | 255 |
| 8(N) | N | | N x 2'6" | | N x 2'6" | N x 165 | N x 85 |
| 102 | 2 | | 5'0" | | 5'0" | 380 | 190 |
| 103 | 3 | 9'11" | 7'6" | 9'6" | 7'6" | 570 | 285 |
| 10(N) | N | | N x 2'6" | | N x 2'6" | N x 190 | N x 95 |
| 122 | 2 | | 5'0" | | 5'0" | 480 | 240 |
| 123 | 3 | 11'11" | 7'6" | 11'6" | 7'6" | 720 | 360 |
| 12(M) | N | | N x 2'6" | | N x 2'6" | N x 240 | N x 120 |



| PART | NAME | GALV | ALUM | STAINLESS |
|------|----------|------|------|-----------|
| 1 | BASE | 16 | 14 | 18 |
| 2 | BRACES | 18 | 16 | 18 |
| 3 | DAMPER | 22 | 16 | 22 |
| 4 | WINDBAND | 22 | 16 | 22 |
| 5 | GUTTERS | 22 | 16 | 22 |
| 6 | BAFFLES | 22 | 16 | 22 |



Thermoflow Pictures



Thermoflow Guide Specification

1.1. DESCRIPTION:

Furnish and Install Thermoflow[®] natural ventilators and accessories as indicated on drawings.

1.2. QUALITY ASSURANCE:

MOFFITT (Jacksonville, FL, 1-800-474-3267) Products establish the standard of quality required. Manufacturer and erector shall demonstrate a minimum of five (5) years of related industry experience.

1.3. SUBSTITUTIONS:

No substitutions will be considered unless written request for approval has been submitted by the bidder and has been received by the designer at least ten (10) days prior to bid date. Any proposed substitutions should meet the standards set by the specification.

1.4. SUBMITTALS:

Furnish approval drawings prior to fabrication and erection drawings prior to shipment showing all erection procedures and accessories required for the specified product.

1.5. DESIGN

THERMOFLOW Ridge Ventilators shall be designed for airflow capacities as shown on capacity table found on page 3 of this catalog.

2.1. MATERIALS

The Thermoflow natural ventilator

2.2. ACCESSORIES

Ventilators shall be equipped with all standard accessories as specified.

3.1. INSPECTIONS

Examine alignment telescoped modules verify all caulking and fasteners have been applied per installation instructions.

3.2. INSTALLATION & ERECTION

Install THERMOFLOW Ridge Ventilator and accessories in conformance with approved drawings and MOFFITT specifications.

3.3. DAMAGED MATERIAL

Repair or replace all damaged material.