

# *Thermoflow*®

Low-Profile Modular Natural Ventilator



MoffittCorp.com | (800) 474-3267  
1351 13th Ave S. Suite 130  
Jacksonville Beach, FL 32250

 **MOFFITT CORPORATION**  
NATURAL VENTILATION SOLUTIONS

## **Thermoflow<sup>®</sup> Table of Contents**

Thermoflow<sup>®</sup> Table of Contents ..... 2

Thermoflow<sup>®</sup> Product Details ..... 3

Thermoflow<sup>®</sup> Submittal Data ..... 4

Thermoflow<sup>®</sup> Mounting Photos ..... 5

Thermoflow<sup>®</sup> Module & Cell Photos ..... 6

Thermoflow<sup>®</sup> Guide Specification ..... 7

## Thermoflow® Product Details

### DESCRIPTION

The Thermoflow® low-profile ventilator is very effective at evacuating large amounts of warm air and smoke. It has been designed to provide superior air-flow capacity levels and simplified installation, while still providing minimal roof load and wind load. The Thermoflow® is particularly useful in low-temperature climates that need a lightweight ventilation, because it has a built in damper that can be cut-off during cold weather.

### STANDARD FEATURES

- Length: 4' 11" – 11' 11"
- Width: 5' – 10'
- Ships in Fully Assembled Modules
- Bird screen: ½" 19ga Galvanized Mesh
- Component Material: Galvanized Steel
- Curb Mounted: A flat curb is required for mounting

### OPTIONAL FEATURES

- Dampers – Power Open Spring Closed
  - **Motor Operated:** 115VAC Duff-Norton® Actuator
  - **Manual Roof Operated** with Handle
  - **Manual Factory Floor Operated** with Winch
  - Fusible Link Compatible with all options
  - Max Operating Length = 30'
- Component Material
  - Stainless Steel
  - Aluminum
  - Kynar Coated Steel to match Color
- Additional Mounting Options
  - Dual/Double Mounted – Additional Flashing Provided
  - Slope Mounted – Contact a Moffitt design engineer to confirm possibilities
  - Peak Mounted

### PRODUCT BENEFITS

- Zero Maintenance Cost
- Cold weather protection damper
- Low-profile ventilator imparts minimal wind load

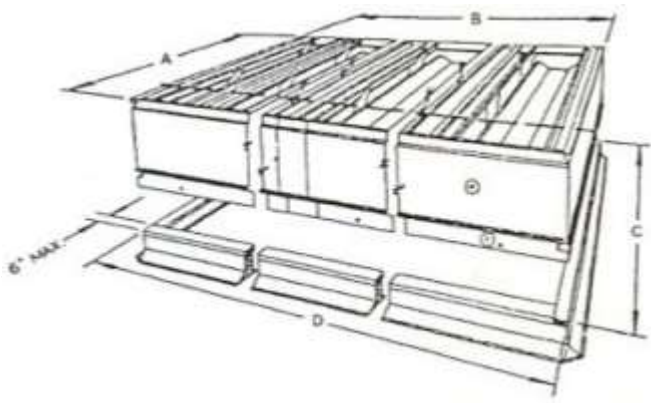
### INDUSTRIAL APPLICATION

- Warehouses
- General Manufacturing
- Storage Facilities
- Steel Plants
- Aluminum Plants
- Glass Plants
- Power Plants
- Chemical Plants
- Mine Processing Plants
- Pulp & Paper Plants

## Thermoflow<sup>®</sup> Submittal Data

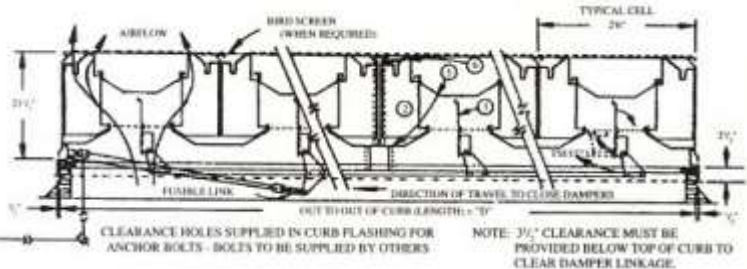
MODULE NUMBER	NUMBER OF CELLS	MODULE WIDTH A"	MODULE LENGTH B"	CURB WIDTH C"	CURB LENGTH* D"	MODULE WEIGHT GALV.	MODULE WEIGHT ALUM.
52	2		5'0"		5'0"	210	130
53	3		7'6"		7'6"	315	195
54	4	4' 11"	10"0'	4'6"	10"0'	420	280
5(N)	N		N x 2'6"		N x 2'6"	N x 105	N x 65
62	2		5'0"		5'0"	260	135
63	3		7'6"		7'6"	390	200
64	4	5' 11"	10"0'	5'6"	10"0'	520	270
6(N)	N		N x 2'6"		N x 2'6"	N x 130	N x 68
72	2		5'0"		5'0"	280	140
73	3		7'6"		7'6"	420	210
74	4	7'5"	10"0'	7'0"	10"0'	560	280
7(N)	N		N x 2'6"		N x 2'6"	N x 140	N x 70
82	2		5'0"		5'0"	330	170
83	3	8'8"	7'6"	8'3"	7'6"	495	255
8(N)	N		N x 2'6"		N x 2'6"	N x 165	N x 85
102	2		5'0"		5'0"	380	190
103	3	9'11"	7'6"	9'6"	7'6"	570	285
10(N)	N		N x 2'6"		N x 2'6"	N x 190	N x 95
122	2		5'0"		5'0"	480	240
123	3	11'11"	7'6"	11'6"	7'6"	720	360
12(M)	N		N x 2'6"		N x 2'6"	N x 240	N x 120

\*Note: When multiple modules are used in a vent run, the total curb length is equal to the total number of modules minus 1 multiplied by 1/4". This value is then added to the curb length from the table to get dimension D shown below. Dimensions A, B, and C are taken directly from the table.



PART	NAME	GALV	ALUM	STAINLESS
1	BASE	16	14	18
2	BRACES	18	16	18
3	DAMPER	22	16	22
4	WINDBAND	22	16	22
5	GUTTERS	22	16	22
6	BAFFLES	22	16	22

22" w/ damper  
19" w/o damper



## Thermoflow<sup>®</sup> Mounting Photos



**Flat Roof Mounted Thermoflow**



**Dual/Double Mounted Thermoflow**



**Peak Mounted Thermoflow**



## Thermoflow<sup>®</sup> Module & Cell Photos



Thermoflow<sup>®</sup> Module



Thermoflow<sup>®</sup> Cell

## Thermoflow<sup>®</sup> Guide Specification

### 1.1. DESCRIPTION:

Furnish and Install Thermoflow<sup>®</sup> natural ventilators and accessories as indicated on drawings.

### 1.2. QUALITY ASSURANCE:

MOFFITT (Jacksonville, FL, 1-800-474-3267) Products establish the standard of quality required. Manufacturer and erector shall demonstrate a minimum of five (5) years of related industry experience.

### 1.3. SUBSTITUTIONS:

No substitutions will be considered unless written request for approval has been submitted by the bidder and has been received by the designer at least ten (10) days prior to bid date. Any proposed substitutions should meet the standards set by the specification.

### 1.4. SUBMITTALS:

Furnish approval drawings prior to fabrication and erection drawings prior to shipment showing all erection procedures and accessories required for the specified product.

### 2.1. MATERIALS

The Thermoflow<sup>®</sup> natural ventilator is made aluminum and steel.

### 2.2. ACCESSORIES

Ventilators shall be equipped with all standard accessories as specified.

### 1.1. INSPECTIONS

Examine alignment telescoped modules verify all caulking and fasteners have been applied per installation instructions.

### 1.2. INSTALLATION & ERECTION

Install THERMOFLOW Ridge Ventilator and accessories in conformance with approved drawings and MOFFITT specifications.

### 1.3. DAMAGED MATERIAL

Repair or replace all damaged material.