

Thermoflow[®] Natural Ventilator



MoffittCorp.com | (800) 474-3267
1351 13th Ave S. Suite 130
Jacksonville Beach, FL 32250

 **Moffitt**
NATURAL VENTILATION SOLUTIONS

Thermoflow[®] Table of Contents

Thermoflow [®] Table of Contents	2
Thermoflow [®] Product Details	3
Thermoflow [®] Submittal Data.....	4
Thermoflow [®] Mounting Photos.....	5
Thermoflow [®] Module & Cell Photos.....	6

Thermoflow[®] Product Details

PRODUCT DESCRIPTION

The Thermoflow[®] low-profile ventilator is very effective at evacuating large amounts of warm air and smoke. It has been designed to provide superior air-flow capacity levels and simplified installation, while still providing minimal roof load and wind load. The Thermoflow[®] is particularly useful in low-temperature climates that need a lightweight ventilation, because it has a built in damper that can be cut-off during cold weather.

STANDARD FEATURES

- Length: 4' 11" – 11' 11"
- Width: 5' – 10'
- Ships in Fully Assembled Modules
- Bird screen: ½" 19ga Galvanized Mesh
- Component Material: Galvanized Steel
- Curb Mounted: flat curb required for mounting

OPTIONAL FEATURES

- Dampers – Power Open Spring Closed
 - Motor Operated: 115VAC Duff-Norton[®] Actuator
 - Manual Roof Operated with Handle
 - Manual Factory Floor Operated with Winch
 - Fusible Link Compatible with all options
 - Max Operating Length = 30'
- Component Material
 - Stainless Steel
 - Aluminum
 - Kynar Coated Steel to match Color
- Additional Mounting Options
 - Dual/Double Mounted – Additional Flashing Provided
 - Slope Mounted – Contact a Moffitt design engineer to confirm possibilities
 - Peak Mounted
- Dampers – Power Open Spring Closed
 - Motor Operated: 115VAC Duff-Norton[®] Actuator
 - Manual Roof Operated with Handle
 - Manual Factory Floor Operated with Winch
 - Fusible Link Compatible with all options
 - Max Operating Length = 30'
- Component Material

PRODUCT BENEFITS

- Zero Maintenance
- Cold Weather protection damper is default
- Low-profile design imparts minimal wind load on building

INDUSTRY APPLICATIONS

- | | | |
|-----------------------|--------------------------|-----------------------|
| • Aluminum | • Glass & Glass Products | • Power stations |
| • Automotive Plants | • Heavy Manufacturing | • Specialty Chemicals |
| • Cement & Concrete | • Mining & Minerals | • Steel industry |
| • Foundries & Forging | • Process Industry | • +Other |

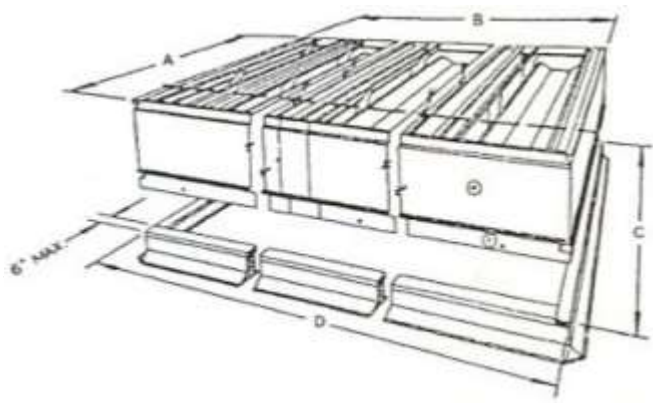
All Specifications are subject to change without notice unless approved in submittal by Moffitt Corporation

Thermoflow[®] Natural Ventilator

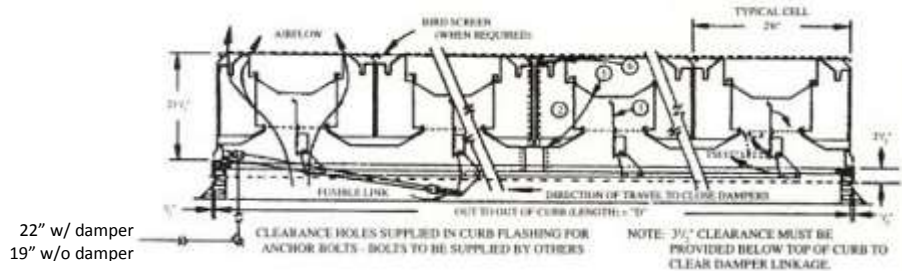
Thermoflow[®] Submittal Data

MODULE NUMBER	NUMBER OF CELLS	MODULE WIDTH A"	MODULE LENGTH B"	CURB WIDTH C"	CURB LENGTH* D"	MODULE WEIGHT GALV.	MODULE WEIGHT ALUM.
52	2		5'0"		5'0"	210	130
53	3		7'6"		7'6"	315	195
54	4	4' 11"	10'0"	4'6"	10'0"	420	280
5(N)	N		N x 2'6"		N x 2'6"	N x 105	N x 65
62	2		5'0"		5'0"	260	135
63	3		7'6"		7'6"	390	200
64	4	5' 11"	10'0"	5'6"	10'0"	520	270
6(N)	N		N x 2'6"		N x 2'6"	N x 130	N x 68
72	2		5'0"		5'0"	280	140
73	3		7'6"		7'6"	420	210
74	4	7'5"	10'0"	7'0"	10'0"	560	280
7(N)	N		N x 2'6"		N x 2'6"	N x 140	N x 70
82	2		5'0"		5'0"	330	170
83	3	8'8"	7'6"	8'3"	7'6"	495	255
8(N)	N		N x 2'6"		N x 2'6"	N x 165	N x 85
102	2		5'0"		5'0"	380	190
103	3	9'11"	7'6"	9'6"	7'6"	570	285
10(N)	N		N x 2'6"		N x 2'6"	N x 190	N x 95
122	2		5'0"		5'0"	480	240
123	3	11'11"	7'6"	11'6"	7'6"	720	360
12(M)	N		N x 2'6"		N x 2'6"	N x 240	N x 120

*Note: When multiple modules are used in a vent run, the total curb length is equal to the total number of modules minus 1 multiplied by 1/4". This value is then added to the curb length from the table to get dimension D shown below. Dimensions A, B, and C are taken directly from the table.



PART	NAME	GALV	ALUM	STAINLESS
1	BASE	16	14	18
2	BRACES	18	16	18
3	DAMPER	22	16	22
4	WINDBAND	22	16	22
5	GUTTERS	22	16	22
6	BAFFLES	22	16	22



Thermoflow[®] Mounting Photos



Flat Roof Mounted Thermoflow



Dual/Double Mounted Thermoflow



Peak Mounted Thermoflow

Thermoflow[®] Natural Ventilator

Thermoflow[®] Module & Cell Photos



Thermoflow[®] Module



Thermoflow[®] Cell