

# *RidgePac*

Ridge Mounted Natural Ventilator

---



MoffittCorp.com | (800) 474-3267  
1351 13th Ave S. Suite 130  
Jacksonville Beach, FL 32250



# **Ridgepac** Small Natural Ventilator

---

## **Ridgepac Product Details**

### **PRODUCT DESCRIPTION**

The RidgePac is designed to be mounted on the ridge of the building to ensure maximum warm air exhaust. This natural ventilator has been designed to be highly efficient, aesthetically pleasing, and a good value with low-cost per CFM.

Furnished in self-contained ten-foot modular units, the RidgePac is made for fast and easy installation. Units sit end-to-end with one another, overlapping to ensure that there are no gaps and no leakages.

Vents may be furnished with or without dampers to control the flow of air. Pull chains are the standard operators for dampers. Multiple damper operators are available for two or more units.

### **STANDARD FEATURES**

- Throat sizes 12" – 36"
- Lengths 10' – 1000'+
- 10' sections for continuous run installation
- Bird Screen - galvanized 4 x 4 mesh
- External Construction - 26-gauge exterior
- Internal Construction - 24-, 20- and 18-gauge.
- Finish - Galvalume or Polar White finish
- Installation Instructions

### **OPTIONAL FEATURES**

- Dampers
- Special Materials
  - Aluminum
  - Stainless Steel
- Finish
  - Custom colors
  - Kynar® coating

### **PRODUCT BENEFITS**

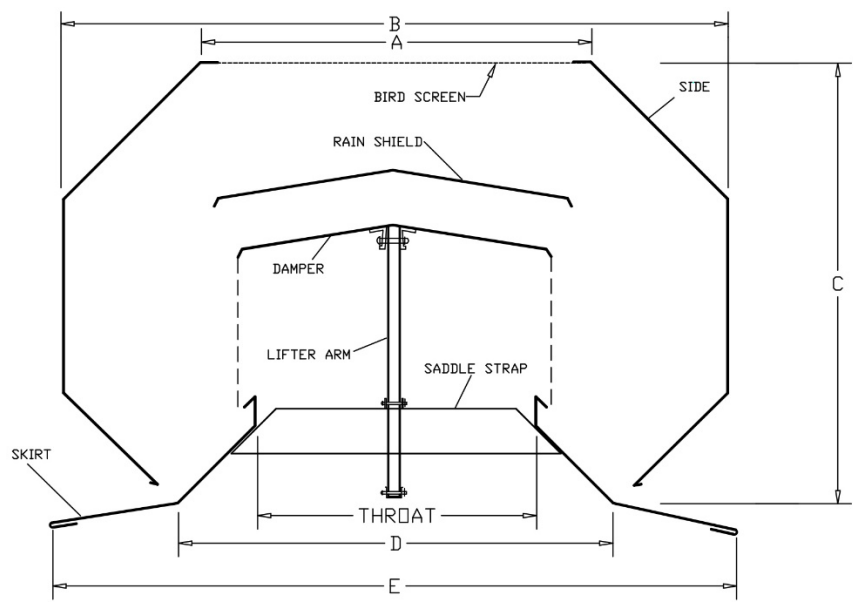
- Zero Maintenance Cost.
- Zero Operating Cost.
- No Gutters within opening.
- Greater Efficiency permits fewer, lower cost installations.
- Low silhouette blends smoothly with structure.
- Fits all common roof slopes.
- Keeps air moving, prevents moisture condensation, and exhaust heat & harmful fumes & vapors.
- Die formed sheet metal and machined parts for long service life

### **INDUSTRY APPLICATIONS**

- |                         |                   |                          |
|-------------------------|-------------------|--------------------------|
| • Warehouses            | • Aluminum Plants | • Mine Processing Plants |
| • General Manufacturing | • Glass Plants    | • Pulp & Paper Plants    |
| • Storage Facilities    | • Power Plants    | • +Others                |
| • Steel Plants          | • Chemical Plants |                          |

Ridgepac Ridge Ventilator Submittal Data (9, 12)

RIDGEPAC -9  
RIDGEPAC -12



MODEL	Throat	A	B	C	D	E	Weight
RP-9	9"	13"	21 ¼"	14 ½"	16"	28 ¼"	190 lbs.*
RP-12	12"	17"	28 ½"	18"	20 ¾"	33"	230 lbs.*

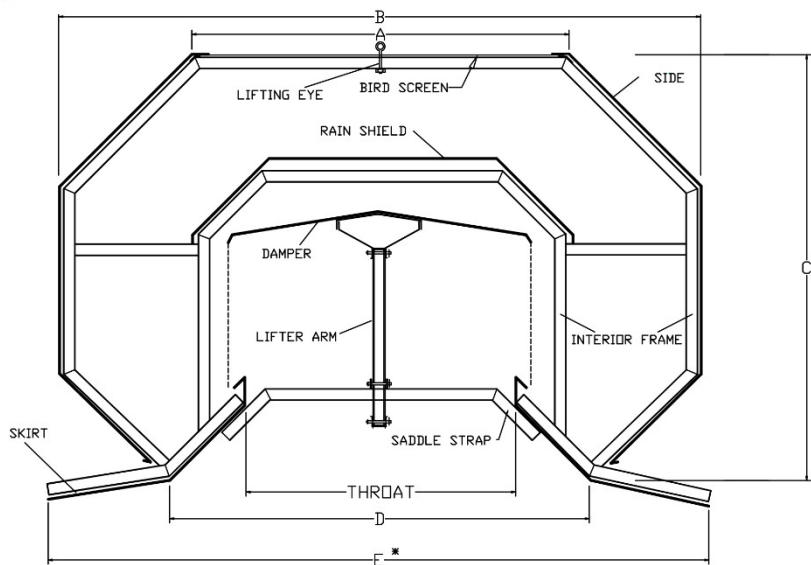
\*Approximate weight, crated.

Number of runs	Model	"L" Length of Run	Slope	Damper	Assem 10' Sections	K.D.	Options

# Ridgepac Small Natural Ventilator

## Ridgepac Ridge Ventilator Submittal Data (15, 18, 24)

RIDGEPAC-15  
RIDGEPAC-18  
RIDGEPAC-24  
RIDGEPAC-30  
RIDGEPAC-36

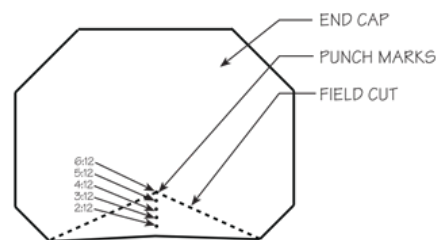
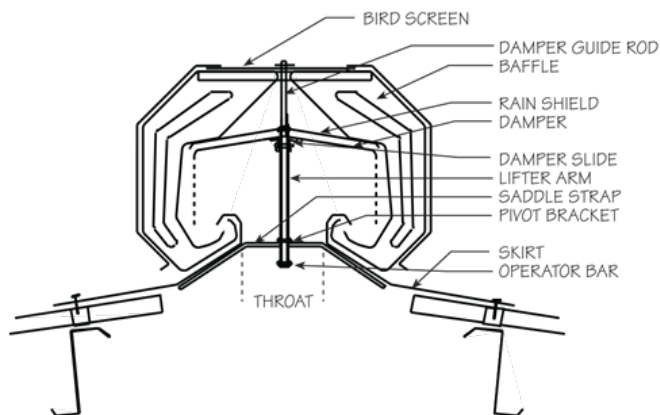


MODEL	Throat	A	B	C	D	E	Weight
RP-15	15"	22 5/8"	38 31/32"	26-1/2"	25 1/8"	41 3/16"	275 lbs.
RP-18	18"	25 7/16"	44"	30 5/16"	29 1/8"	47 3/16"	300 lbs.
RP-24	24"	33 1/4"	57"	38 3/16"	37 1/8"	59 3/8"	400 lbs.
RP-30	30"	38 9/16"	67 1/2"	45 3/8"	46 5/8"	69 5/8"	450 lbs.
RP-36	36"	47 9/16"	81 1/4"	53 13/16"	55 1/2 "	83 3/4"	500 lbs.

*\*\*Approximate weight, uncrated*

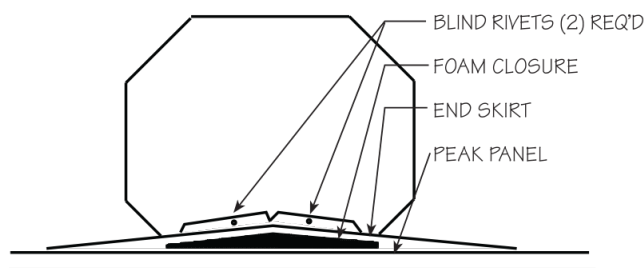
Number of runs	Model	"L" Length of Run	Slope	Damper	Assem 10' Sections	K.D.	Options

## Flat Skirt Installation Details



### END CAP DETAIL

**Note:** Dotted line indicates field cut for 6:12 roof slope. Other slopes as noted.

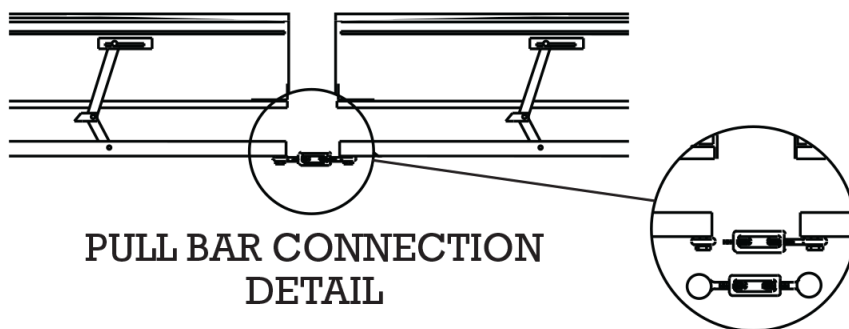


### ROOF PITCH LESS THAN 1:12 INSTALLATION

Installed end skirt for 1:12 roof slope and foam closure with tape sealer top and bottom.

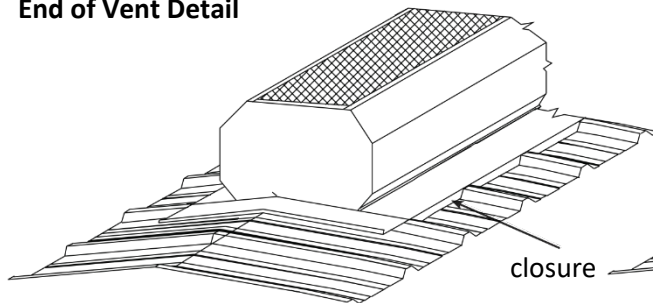
### ROOF PITCH GREATER THAN 5:12 INSTALLATION

Remove two bottom rivets before installing end skirt. Replace the rivets with sheeting screws once end skirt is in place.

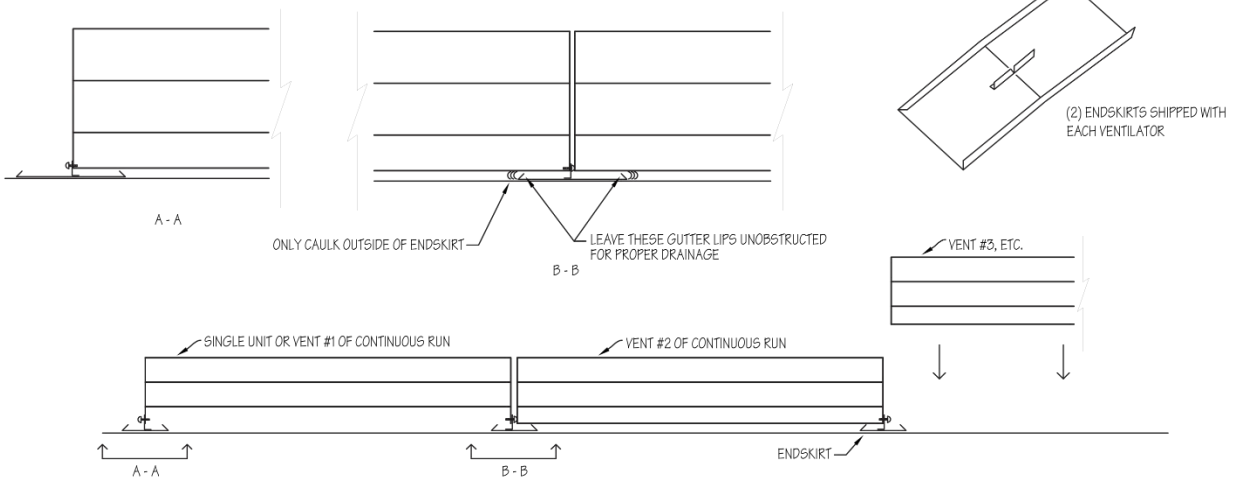
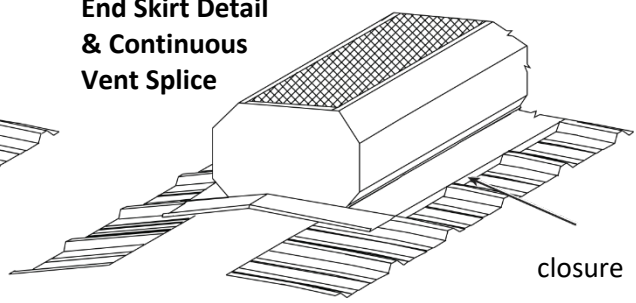


## Flat Skirt Applications

End of Vent Detail

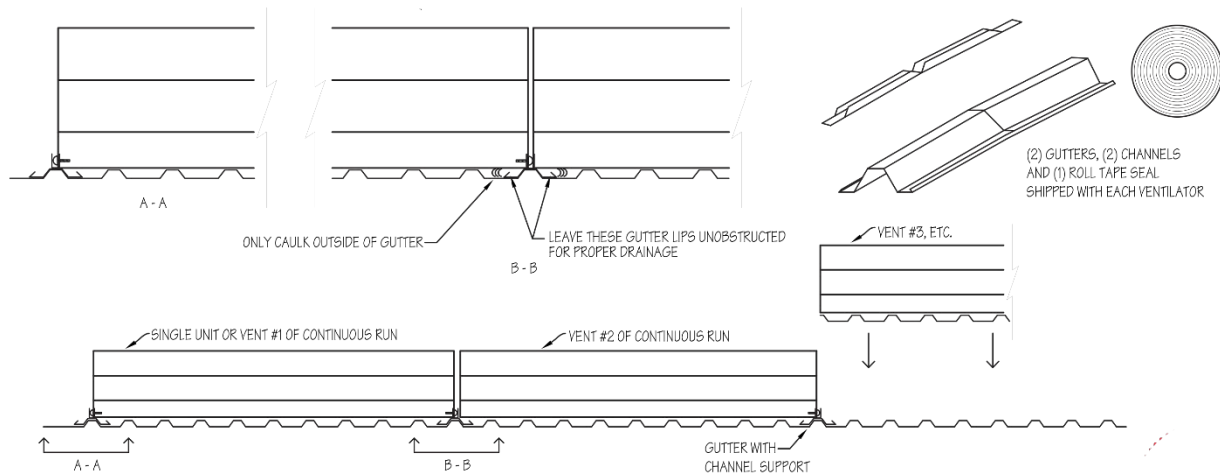
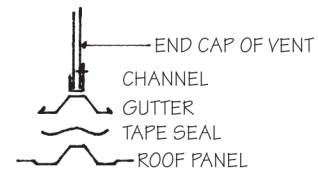
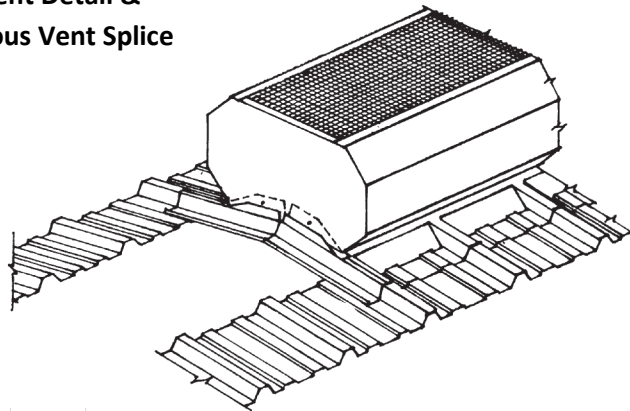


End Skirt Detail  
& Continuous  
Vent Splice



## Die-Formed Skirt Applications

### End of Vent Detail & Continuous Vent Splice



## **RidgePac Operator Instructions**

### **HAND PULL OPERATOR**

- 40' Cable
- (2) Cable Clamps
- Chain Catch
- Pulleys with Eyebolts

### **LEVER OPERATOR** (Operates up to 6–9" vents or 4–12" vents)

- 40' Cable
- (2) Pulleys with Eyebolts
- (2) Cable Clamps
- Eyebolt (not welded) with Nuts
- Lever Handle with Mounting Hardware
- Installation Instructions

### **BOATWINCH OPERATOR** (Operates up to 8–9" vents, 6–12" vents, 4–24" vents or 3–36" vents)

- 60' Cable
- (2) Pulleys with Eyebolts
- Boatwinch
- Cable Catch
- Eyebolts (not welded) with Nuts
- Cable Clamps
- Mounting Hardware
- Installation Instructions

### **OPERATION EXTENSION**

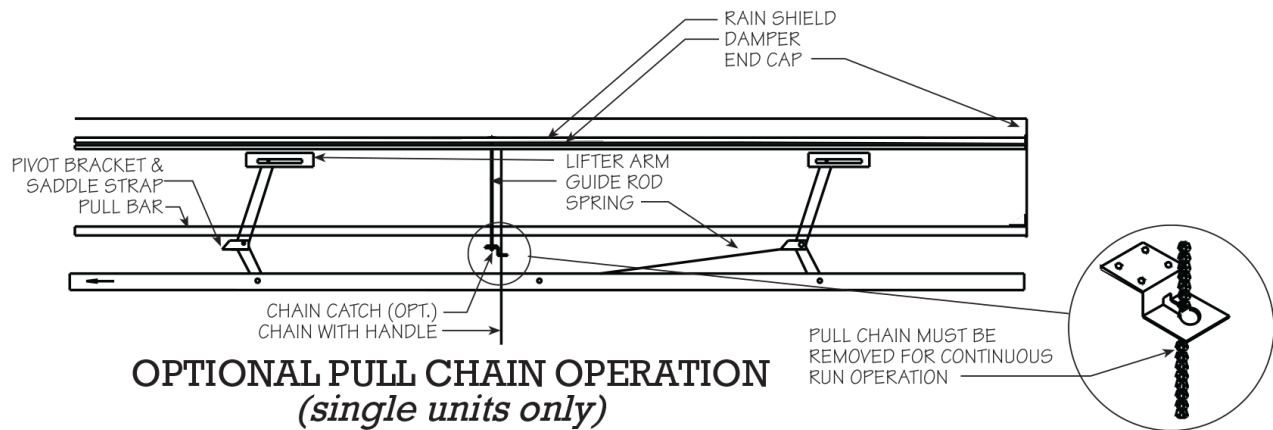
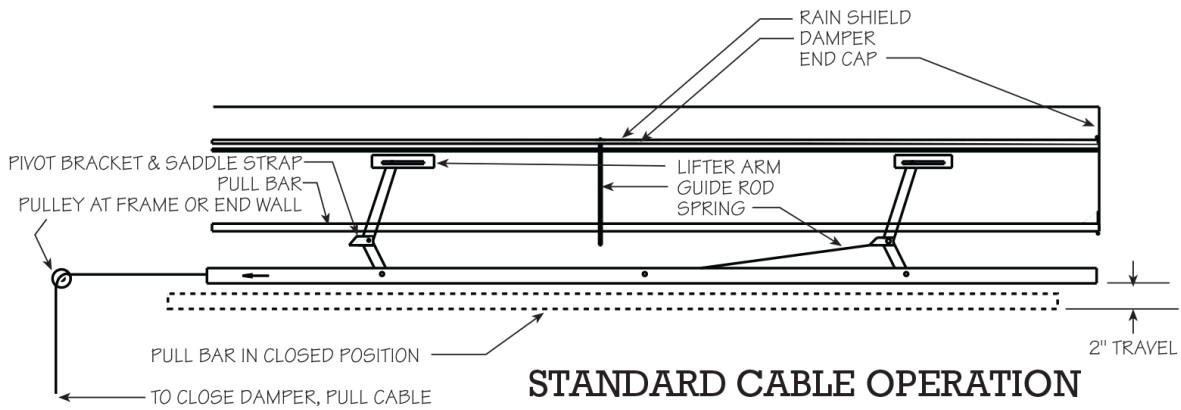
- 50' Cable
- (2) Cable Clamps
- (2) Eyebolts (not welded) with Nuts

### **MOTORIZED OPERATOR** (Operates up to 10–9" vents or 7–12" vents)

- Duff Norton Motor

# Ridgepac Small Natural Ventilator

## RidgePac Operator Instructions



# Ridgepac Small Natural Ventilator

## RidgePac Capacities

To determine capacity per unit, multiply "Base Rating" by "Temperature-Height Factor"

CFM = Base x Temperature-Height Factor

*Based on fresh air intake area 1-1/2 times ventilator throat area. Assumes 5 mph wind speed.*

BASE RATINGS	
THROAT	CFM
12"	3600
15"	4500
18"	5400
24"	7200
30"	9000
36"	10800

TEMPERATURE - HEIGHT FACTORS									
HEIGHT	TEMPERATURE DIFFERENCE								
	5°	10°	15°	20°	25°	30°	35°	40°	45°
10'	.37	.49	.58	.64	.70	.76	.81	.86	.95
15'	.42	.60	.71	.80	.86	.92	.99	1.05	1.09
20'	.53	.70	.81	.92	.99	1.07	1.14	1.22	1.26
25'	.58	.77	.89	1.00	1.08	1.18	1.25	1.33	1.36
30'	.63	.83	.97	1.08	1.17	1.28	1.36	1.45	1.50
35'	.66	.87	1.02	1.14	1.24	1.35	1.44	1.51	1.58
40'	.70	.93	1.08	1.22	1.30	1.41	1.50	1.61	1.68
45'	.74	.96	1.12	1.28	1.38	1.48	1.59	1.68	1.75
50'	.77	1.01	1.18	1.33	1.44	1.56	1.67	1.75	1.83
55'	.80	1.06	1.23	1.39	1.50	1.64	1.72	1.83	1.92
60'	.83	1.09	1.28	1.44	1.55	1.69	1.79	1.90	2.00
65'	.85	1.12	1.32	1.48	1.61	1.74	1.85	1.97	2.06
70'	.88	1.17	1.36	1.53	1.67	1.79	1.89	2.02	2.11
75'	.90	1.19	1.39	1.57	1.69	1.83	1.96	2.06	2.17
80'	.93	1.22	1.42	1.61	1.72	1.86	2.00	2.11	2.20

**Height** = Vertical rise from inlets near floor to ventilator

**Temperature** = Estimated temperature difference between middle of air intake near the floor and ventilator with dampers open