

LVR-4045 Natural Intake Ventilation



MoffittCorp.com | (800) 474-3267
1351 13th Ave S. Suite 130
Jacksonville Beach, FL 32250



LVR-4045-4 Natural Intake Ventilator

LVR-4045-4 Product Details

PRODUCT DESCRIPTION

The 4045-4-G louver features operable blades that allow positive shutoff protection of air intake and exhaust openings. The 4045-4-G is available in a wide array of painted finishes including custom color matching. These units are also available with a variety of factory mounted electric or pneumatic actuators.

STANDARD FEATURES

- Material: Galvannealed steel
- Frame: 4" deep × 20 ga. thick (102 × 1) channel
- Blades: 45° × 20 ga. (1) thick operable J-style
- Screen: 1/2" × 0.063" (12.7 × 1.6) expanded and flattened aluminum.
- Axles: 1/2" (13) diameter plated steel hex
- Linkage: Concealed in frame
- Bearings: Stainless steel oilite, sleeve-type
- Mullion: Visible.
- Minimum Size: 12" × 12" (305 × 305)
- Maximum Size:
 - Single section: 36" × 96" (914 × 2438)
 - Multiple section: Unlimited
- Free Area: [48" × 48" (1219 × 1219) unit]: 7.5 ft² (0.70 m²) 46.9%
- Water Penetration Beginning Point Performance
 - Free Area Velocity: 775 fpm (3.94 m/s)
 - Air Volume Delivered: 5,813 cfm (2.75 m³/s)
 - Pressure Loss: 0.14 in.wg. (35 Pa)
- Velocity @ 0.15 in.wg. Pressure Loss: 811 fpm (4.12 m/s)
- Design Load: 30 psf

OPTIONAL FEATURES

- Factory finish:
 - Polyester Powder
 - Baked Enamel
 - Prime Coat
- Frame Options
 - 1-1/2" (38) flange frame
 - Stucco flange
 - Galvanizing Frame
- Installation Hardware
 - Clip angles
 - Continuous Angles
- Hidden Vertical Mullion
- Construction: Heavy duty 16 ga. (1.6)
- 304 stainless steel construction
- Welded construction
- Alternate bird or insect screens
- Insulated or non-insulated blank-off panels
- Filter racks
- Hinged frame
- Subframe
- Head and/or sill flashing
- Burglar bars
- Frame closure
- Net OD (actual size)

INDUSTRY APPLICATION

- | | | |
|-------------------------|--------------------------|-----------------------|
| • Aluminum Plants | • Glass & Glass Products | • Power Stations |
| • Automotive Plants | • Gypsum Plants | • Pulp & Paper Plants |
| • Cement & Concrete | • Heavy Manufacturing | • Specialty Chemicals |
| • Chemical Plants | • Mining & Minerals | • Steel Mills |
| • Foundries & Forging | • Plastics Plants | • Warehouses |
| • General Manufacturing | • Processing Industry | • +Others |

LVR-4045-4 Natural Intake Ventilator

LVR-4045-4 Free Area

Free Area (ft²)

	12	18	24	30	36	42	48	54	60	66	72	78	84	90	96
12	0.2	0.3	0.5	0.6	0.7	0.8	1.0	1.1	1.2	1.3	1.4	1.5	1.7	1.8	1.9
18	0.5	0.8	1.0	1.3	1.6	1.9	2.1	2.4	2.7	3.0	3.3	3.5	3.8	4.8	4.4
24	0.8	1.2	1.6	2.1	2.5	2.9	3.4	3.8	4.2	4.7	5.1	5.5	6.0	6.4	6.8
30	0.9	1.4	1.9	2.4	2.9	3.4	3.9	4.4	4.9	5.4	5.9	6.4	6.9	7.4	7.9
36	1.2	1.8	2.5	3.1	3.8	4.5	5.1	5.8	6.4	7.1	7.8	8.4	9.1	9.7	10.4
42	1.4	2.2	3.1	3.9	4.7	5.5	6.3	7.2	8.0	8.8	9.6	10.4	11.2	12.1	12.9
54	1.7	2.7	3.7	4.6	5.6	6.6	7.5	8.5	9.5	10.5	11.4	12.4	13.4	14.4	15.3
60	1.8	2.9	3.9	5.0	6.0	7.0	8.1	9.1	10.2	11.2	12.3	13.3	14.3	15.4	16.4
66	2.1	3.3	4.5	5.7	6.9	8.1	9.3	10.5	11.7	12.9	14.1	15.3	16.5	17.7	18.9
72	2.4	3.7	5.1	6.4	7.8	9.2	10.5	11.9	13.2	14.6	15.9	17.3	18.7	20.0	21.4
78	2.5	3.9	5.3	6.8	8.2	9.6	11.1	12.5	13.9	15.3	16.8	18.2	19.6	21.0	22.5
84	2.8	4.3	5.9	7.5	9.1	10.7	12.3	13.8	15.4	17.0	18.6	20.2	21.8	23.3	24.9
90	3.0	4.8	6.5	8.3	10.0	11.7	13.5	15.2	17.0	18.7	20.4	22.2	23.9	25.7	27.4
96	3.3	5.2	7.1	9.0	10.9	12.8	14.7	16.6	18.5	20.4	22.3	24.2	26.1	28.0	29.9

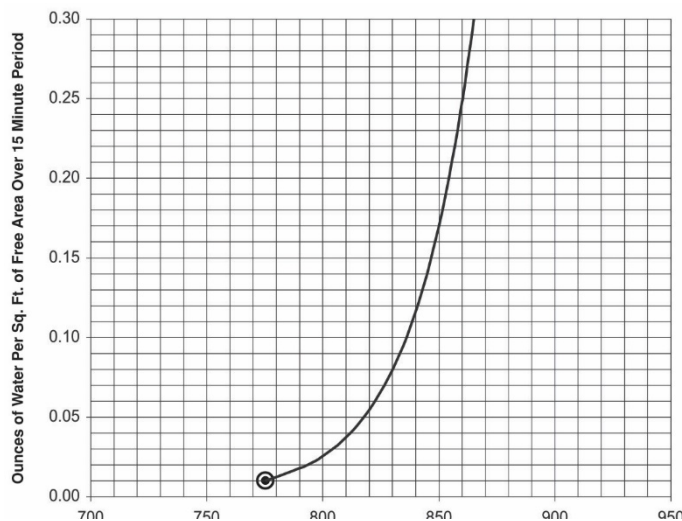
Width (Inches)

Water Penetration

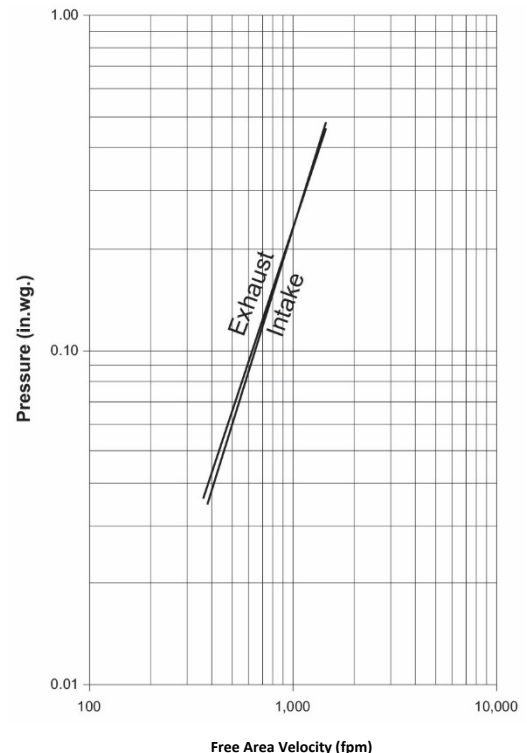
AMCA defines the beginning point of water penetration as the free area velocity at the intersection of a simple linear regression of test data and the line of 0.01 ounces of water per square foot of free area and is measured through a 48" x 48" louver during a 15-minute period.

The AMCA water penetration test provides a method for comparing louver models and designs as to their efficiency in resisting the penetration of rainfall under specific lab conditions. We recommend that intake louvers are selected with a reasonable margin of safety below the beginning point of water penetration to avoid unwanted penetration during severe storm conditions.

Beginning Point of Water Penetration = 775 fpm



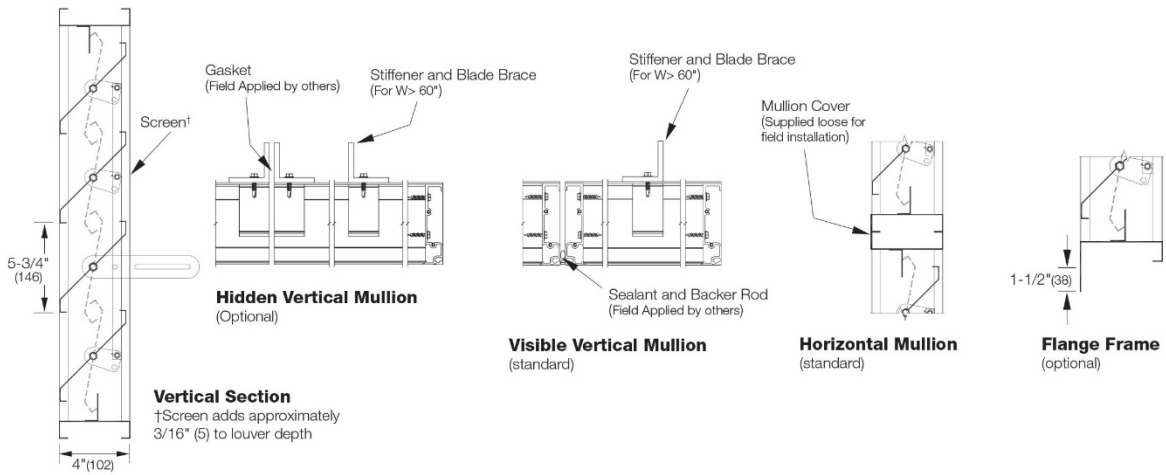
Pressure Loss



Free Area Velocity (fpm)
 Louver Test Size = 48" x 48" (1219 x 1219)
 Pressure loss tested in accordance with Figure 5.5
 of AMCA standard 500-L. Data corrected to
 standard air density.

LVR-4045-4 Natural Intake Ventilator

LVR-4045-4 Attributes



LV 4045-4 Supplemental Options

