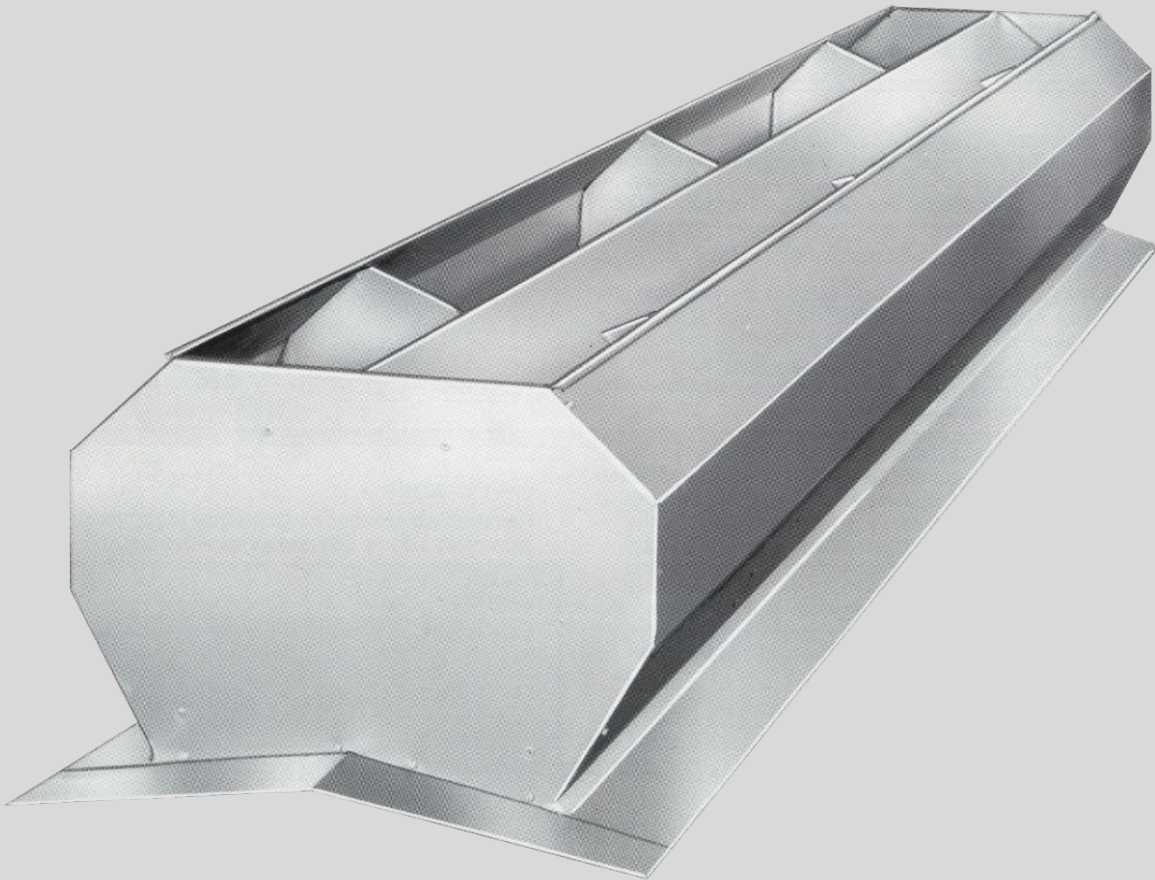


# *Model RV* Ridge Vent

---



MoffittCorp.com | (800) 474-3267  
1351 13th Ave S. Suite 130  
Jacksonville Beach, FL 32250



# **Model RV** Ridge Vent

---

## **Model RV Ridge Vent Description**

### **PRODUCT DESCRIPTION**

The Model RV ventilator is designed to be mounted on the ridge of the building to ensure maximum warm air exhaust. This natural ventilator has been designed to be highly efficient, aesthetically pleasing, and a good value with low-cost per CFM. Furnished in self-contained ten-foot modular units, the Model RV is made for fast and easy installation. Units sit end-to-end with one another, overlapping to ensure that there are no gaps and no leakages. Sections are then connected with join plates.

Vents may be furnished with or without dampers to control the flow of air. Pull chains are the standard operators for dampers. Multiple damper operators are available for two or more units.

### **STANDARD FEATURES**

- Sections: Units are made of modular 10' sections and are spliced with join plates to provide any length required.
- Birdscreen:
  - ½" mesh x 19 ga. Galvanized wire
  - .051 expanded aluminum
- Painting: Optional high-adhesion white enamel or other colors (available at extra cost.)

### **OPTIONAL FEATURES**

- Dampers
- Actuators

### **INDUSTRY APPLICATION**

- |                        |                          |                       |
|------------------------|--------------------------|-----------------------|
| • Aluminum Plants      | • General Manufacturing  | • Pulp & Paper Plants |
| • Automotive Plants    | • Glass & Glass Products | • Schools             |
| • Cement & Concrete    | • Heavy Manufacturing    | • Shipping Centers    |
| • Chemical Plants      | • Industrial Plants      | • Steel Mills         |
| • Commercial Buildings | • Mining & Minerals      | • Supermarkets        |
| • Equipment Rooms      | • Plastics Plants        | • Warehouses          |
| • Foundries & Forging  | • Power Stations         | • +Others             |

# Model RV Ridge Vent

## Model RV Ridge Vent Specifications

Model RR capacity based on 5-MPH wind conditions and 150% inlet area of building to ventilator area.

Stack Height	Temp. Diff.	RV-4	RV-6	RV-9	RV-12	RV-15	RV-18	RV-24
10'	10	103	155	232	310	387	465	620
	15	108	162	243	325	406	487	650
	20	110	165	248	331	413	496	662
	25	112	167	250	334	417	501	668
	30	115	173	260	347	433	520	694
20'	10	109	166	248	331	414	497	662
	15	114	173	259	345	431	519	690
	20	119	180	270	360	449	540	720
	25	121	185	277	369	461	554	738
	30	128	194	291	368	484	581	776
30'	10	114	173	259	345	431	519	690
	15	120	181	272	363	454	545	726
	20	128	194	291	388	484	582	776
	25	133	201	303	403	505	605	806
	30	140	213	320	427	532	640	854
40'	10	119	180	270	359	449	540	718
	15	128	194	291	388	484	582	776
	20	134	204	306	408	510	612	816
	25	145	220	331	441	552	661	882
	30	154	234	351	468	585	703	936